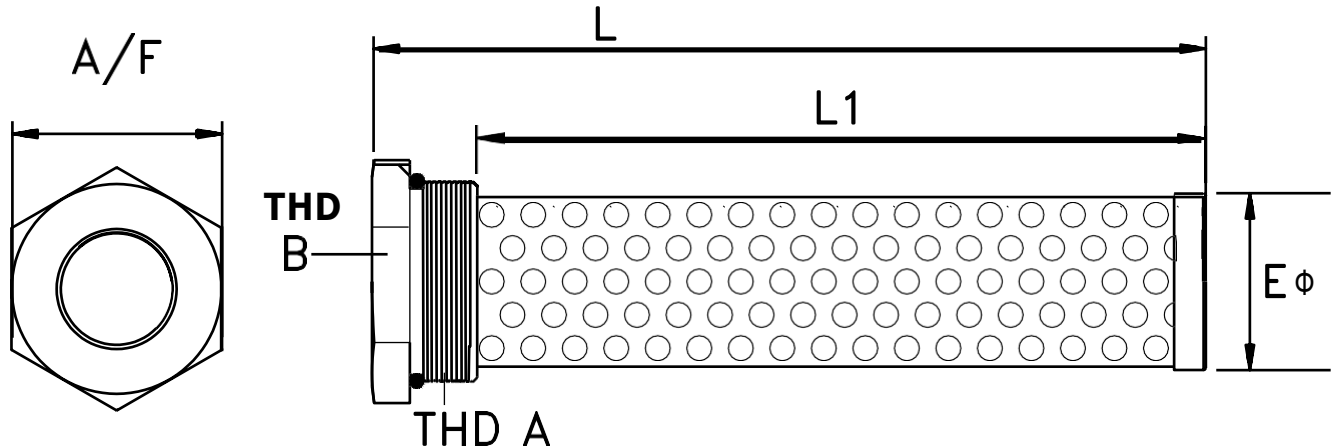


# TANK MOUNTED DIFFUSER - TMSUD



- TANK MOUNTED DIFFUSER
- SIDE WALL OR TANK TOP MOUNTING
- PERFORATED STEEL TUBE
- DIE CAST ALUMINIUM BUSHING WITH O Ring ( SAE THREADS)
- MAX.TEMP 80° C



Series	Bushing Size Dim. A x Dim. B UN (2A) X UN (2B)		Flow GPM / LPM	Dimensions			WT KGS
	L	L1		E	A / F		
TMSUD - 03	1 - 1/16" - 12 X	3/4" - 16		133.5	108	24.0	31.75
TMSUD - 05	1 - 5/16" - 12 X	3/4" - 16		137.0	107	28.5	38.00
TMSUD - 10	1 - 5/8" - 12 X	1 - 1/16" - 12		200.0	174	36.0	46.00
TMSUD - 15	1 - 7/8" - 12 X	1 - 5/16" - 12		210.0	175	42.0	55.00
TMSUD - 20	1 - 7/8" - 12 X	1 - 5/8" - 12		210.0	175	42.0	55.00
TMSUD - 30	2 - 1/2" - 12 X	1 - 5/8" - 12		210.0	175	54.0	70.00
TMSUD - 40	3 - 3/8" - 12 x	2 - 1/2" - 12		210.0	172	78.0	62.00

**MODEL CODE : ASSEMBLY**

MODEL CODE : ASSEMBLY		
<b>TMSUD</b>	03	12S - 08S
	05	16S - 08S
	10	20S - 12S
	15	24S - 16S
	20	24S - 20S
	30	32S - 20S
	40	48S - 32S

**Recommended  
Weld Flange**

To Be Ordered  
Separately

- TWF - 12 U
- TWF - 16 U
- TWF - 20 U
- TWF - 24 U
- TWF - 24 U
- TWF - 32 U
- TWF - 48 U

CONTACT FACTORY FOR OPTIONAL FEATURE