

GROUP 3P – P3000 SERIES

PERFORMANCE DATA

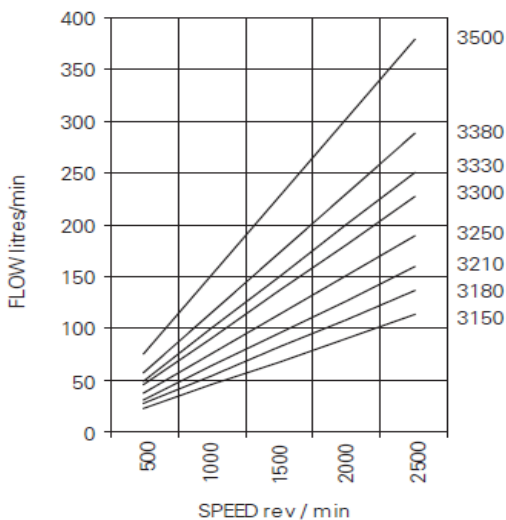
Pressures quoted are relief valve maximum by-pass

Performance with SAE 20W oil at 50° C

PUMP TYPE	DISPLACEMENT cc/rev	NOMINAL DELIVERY @1500 RPM & PRESSURE P		MAXIMUM CONTINUOUS PRESSURE P		SPEED AT MAXIMUM CONTINEOUS PRESSURE P	
		Max(lpm)	Min(lpm)	psi	bar	Max	Min
3150	47.07	70.6	65.3	3000	207	2500	700
3180	56.17	84.2	78.2	3000	207	2500	700
3210	65.23	97.8	91.7	3000	207	2500	700
3250	77.15	115.7	109.0	3000	207	2500	700
3300	92.03	138.0	130.6	2525	174	2500	700
3330	101.71	152.6	144	2300	159	2500	700
3380	116.78	175.2	166.1	2000	138	2500	700
3500	153.66	230.5	217.9	1500	100	2500	700

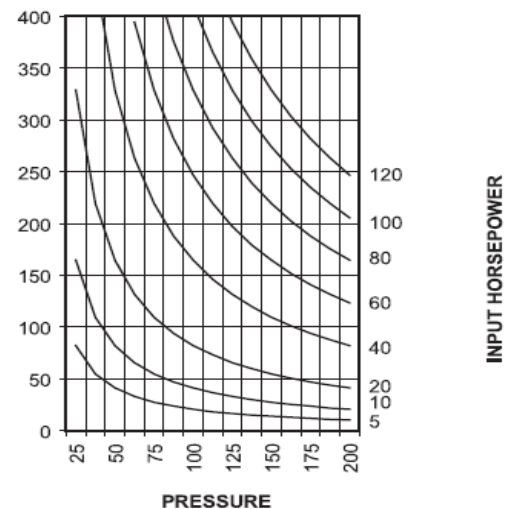
TYPICAL PERFORMANCE

TYPICAL PUMP DELIVERY
Flow at Max. Pressure.

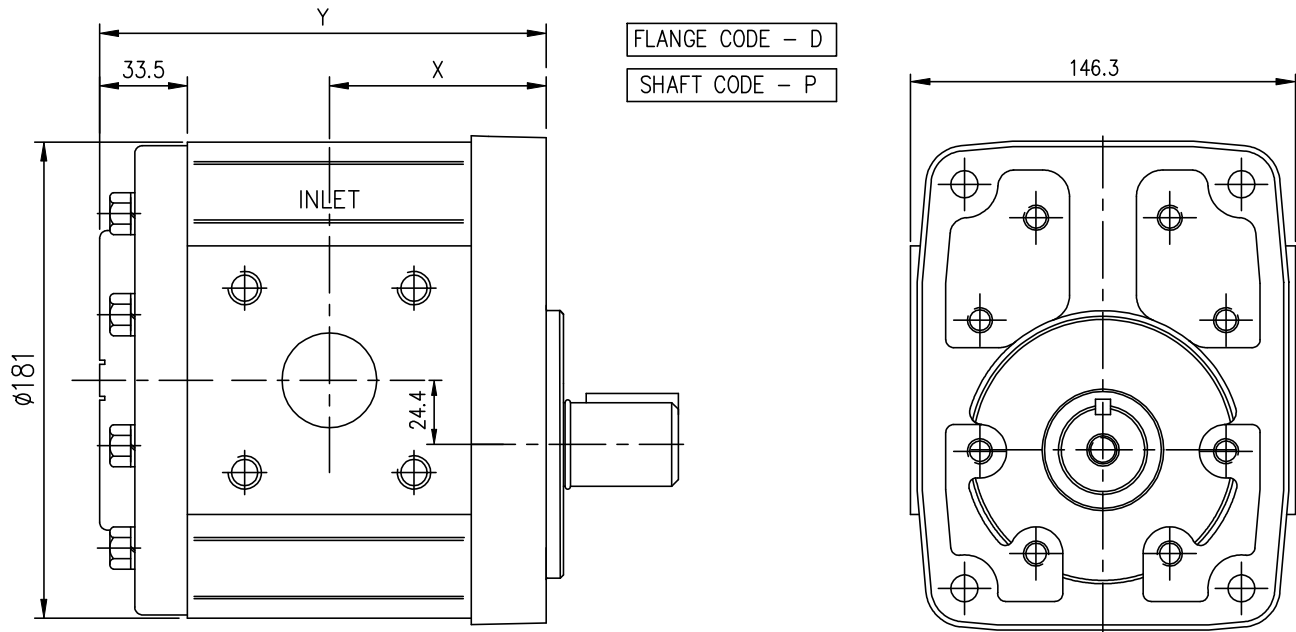


TYPICAL INPUT HORSEPOWER

Fluid SAE 20W
Fluid Temperature 50° C



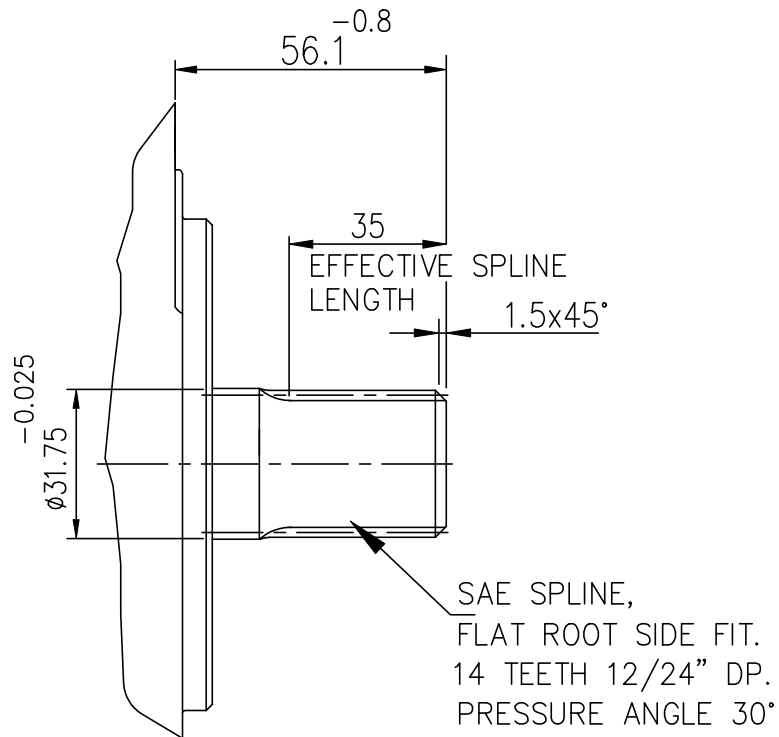
INSTALLATION DIMENSIONS



PUMP TYPE	DIMENSIONS	
	X	Y
3P 3150	70.0	145.1
3P 3180	72.4	150.1
3P 3210	74.9	154.8
3P 3250	78.0	161.2
3P 3300	82.0	169.1
3P 3330	84.6	174.2
3P 3380	88.6	182.3

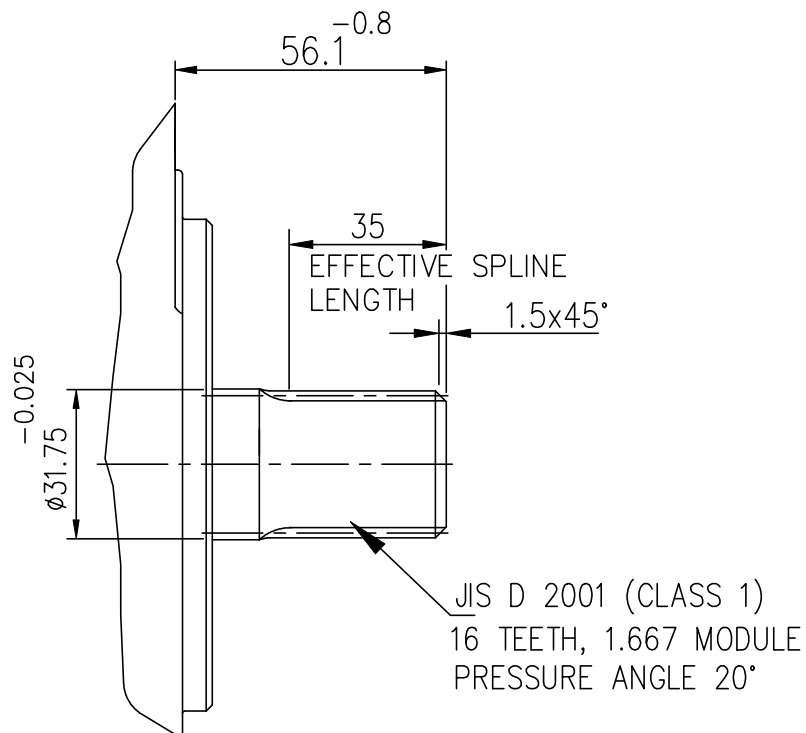
DRIVE SHAFT CODE - S

FLANGE CODE - D & S

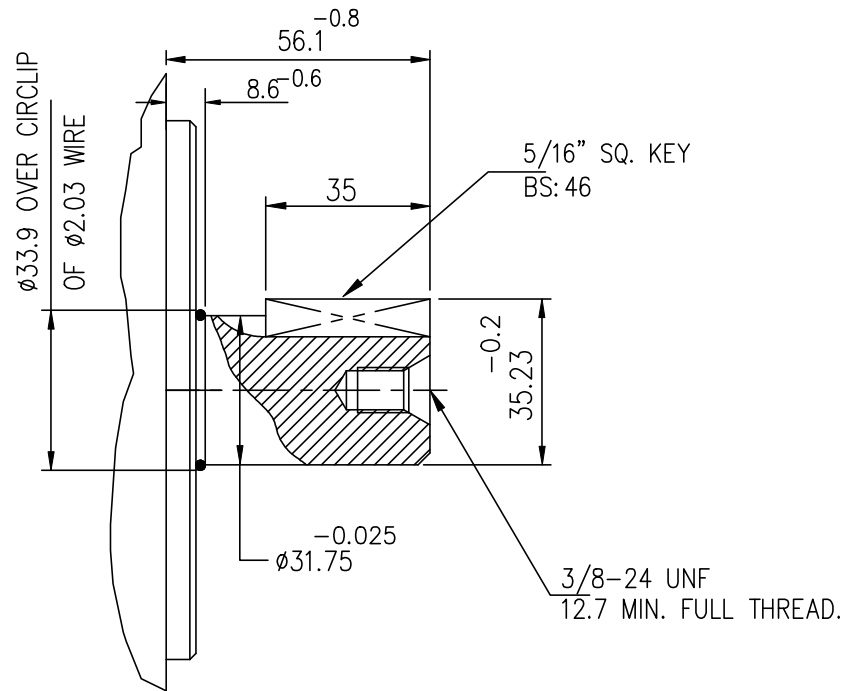


DRIVE SHAFT CODE - J

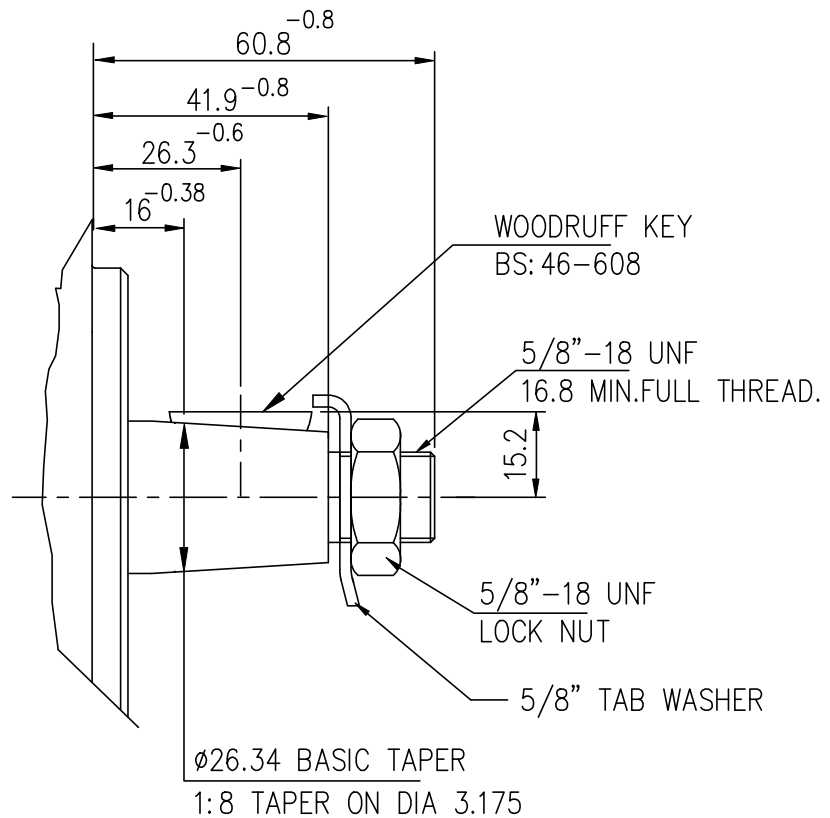
FLANGE CODE - D & S



DRIVE SHAFT CODE - P
 FLANGE CODE - D & S

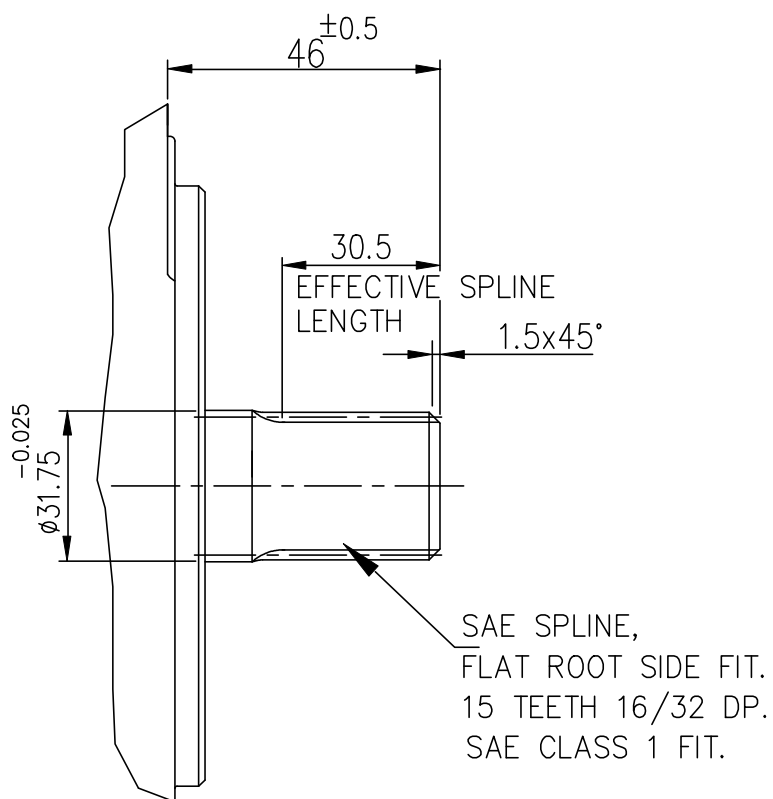


DRIVE SHAFT CODE - T
 FLANGE CODE - D & S



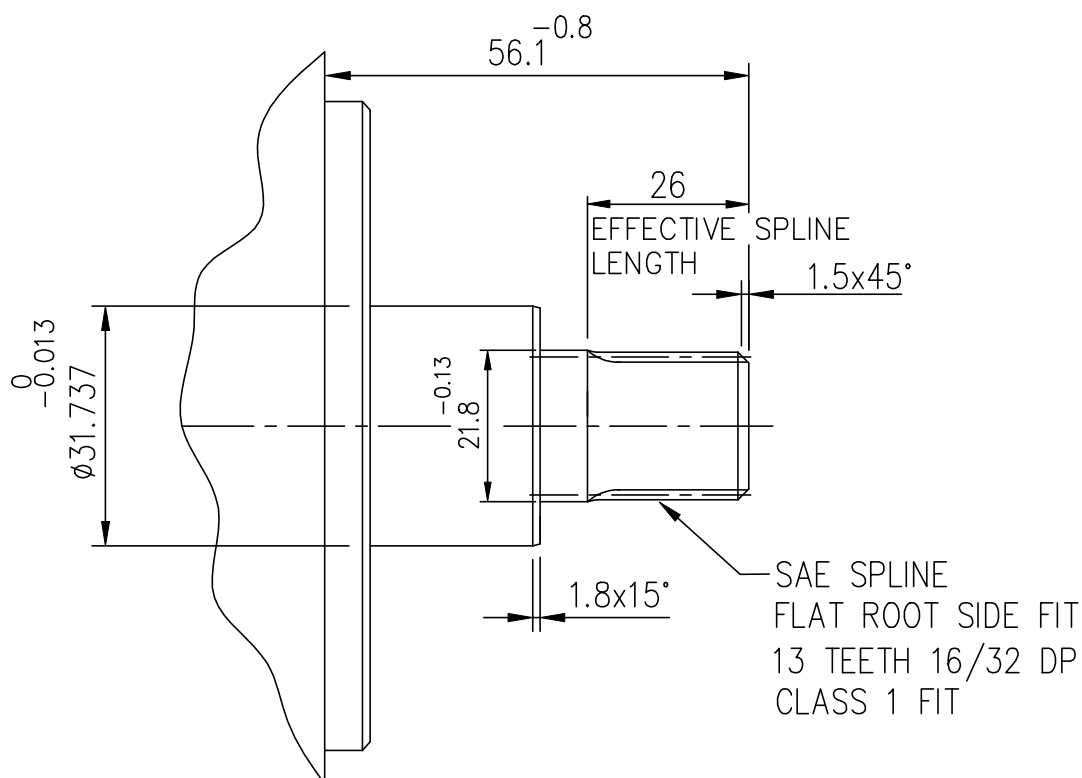
DRIVE SHAFT CODE - B

FLANGE CODE - B, C & E



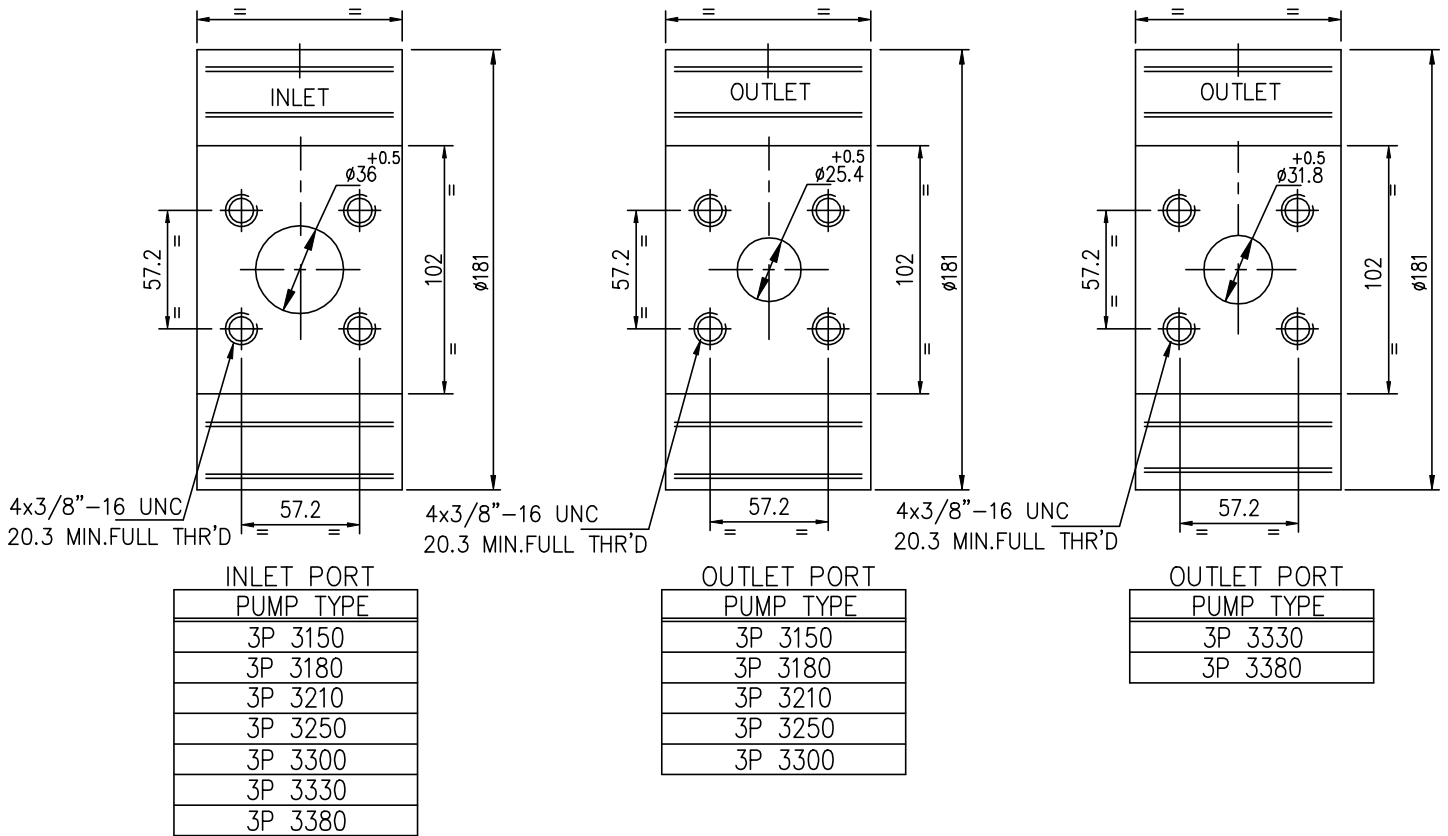
DRIVE SHAFT CODE - C

FLANGE CODE - D & S

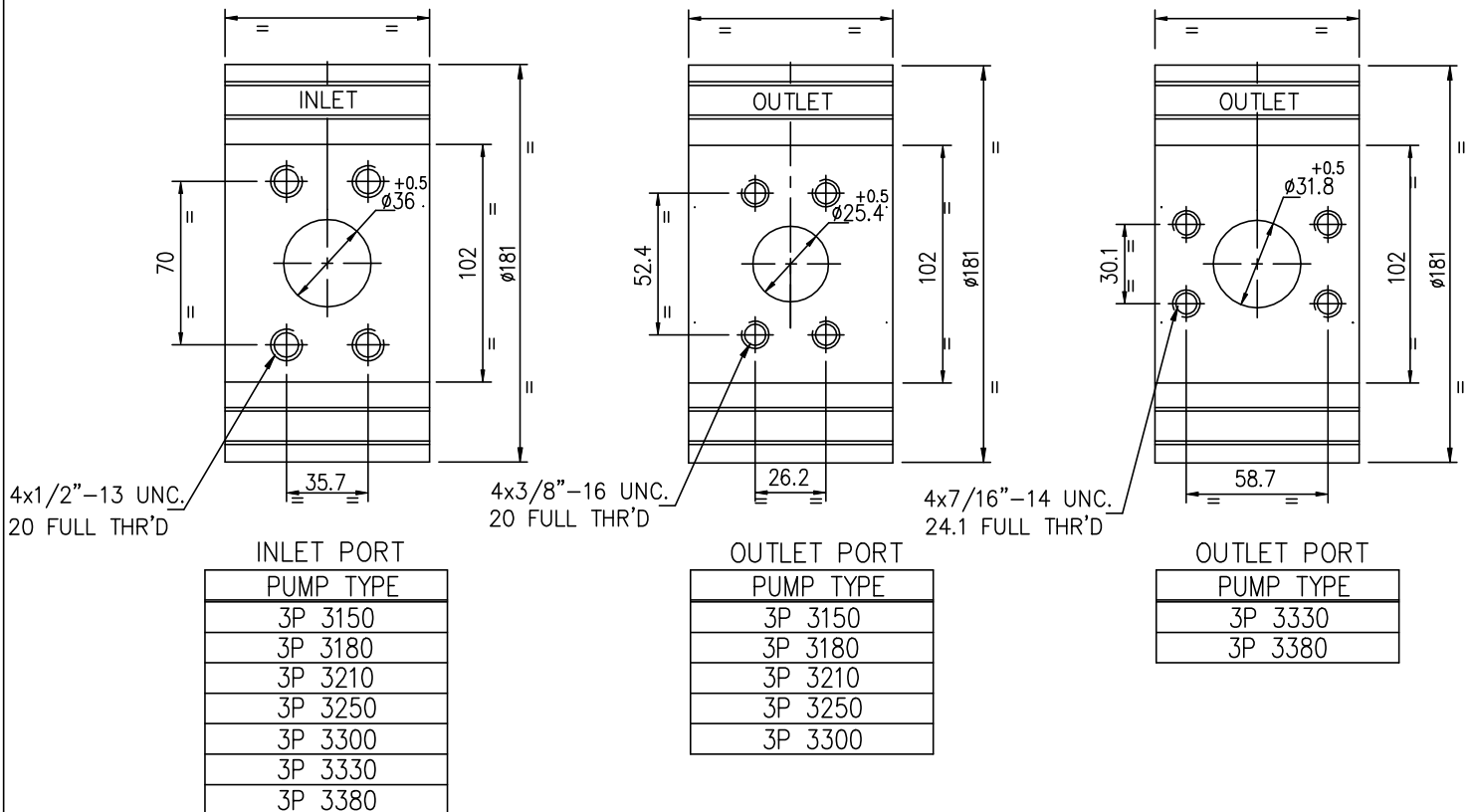


ALL DIMENSIONS ARE IN MM UNLESS OTHERWISE SPECIFIED.

BODY PORTS CODE - F



BODY PORTS CODE - S

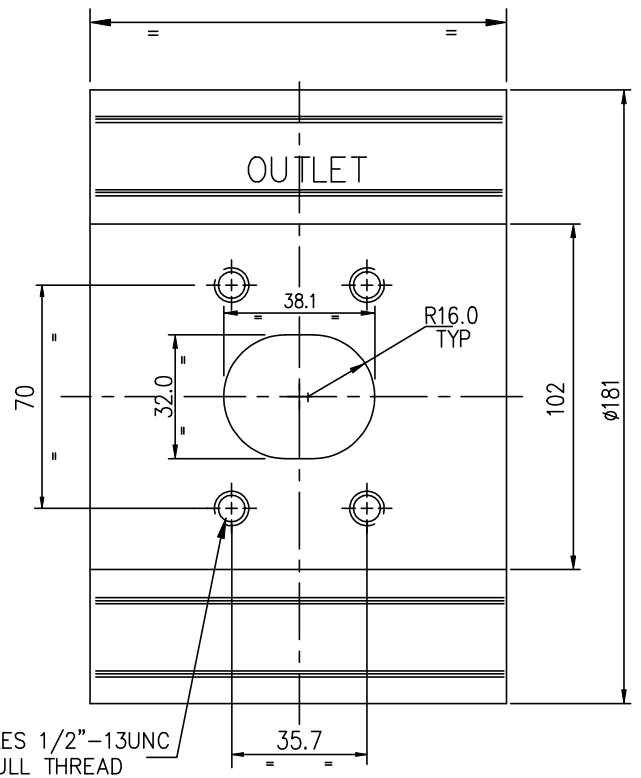
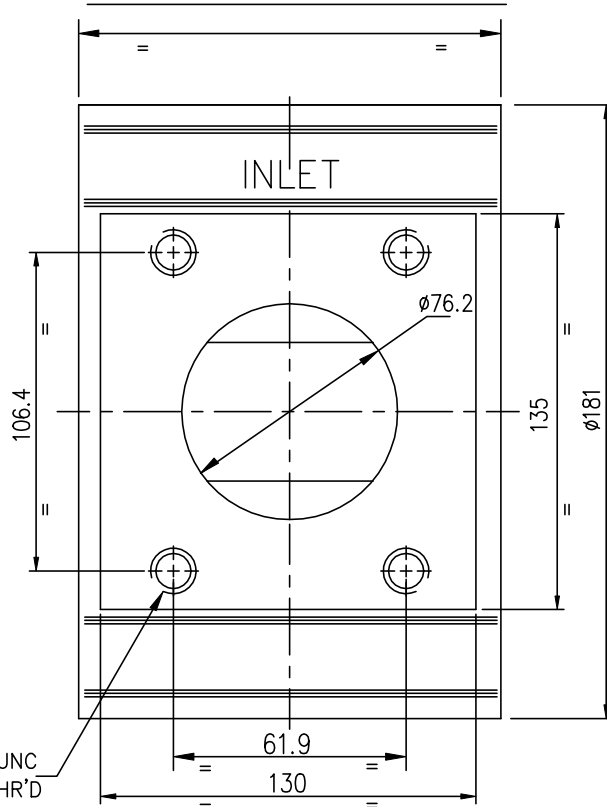


ALL DIMENSIONS ARE IN MM UNLESS OTHERWISE SPECIFIED.

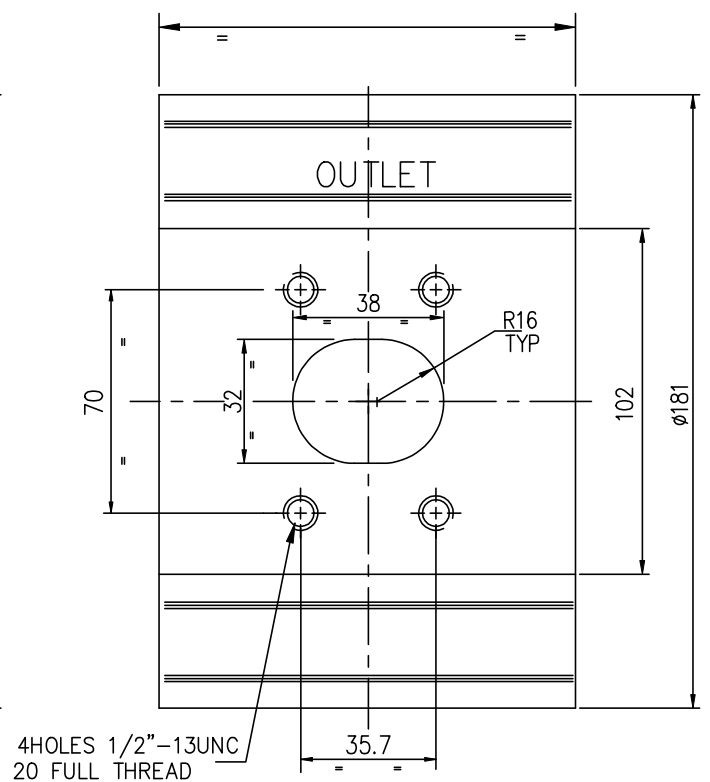
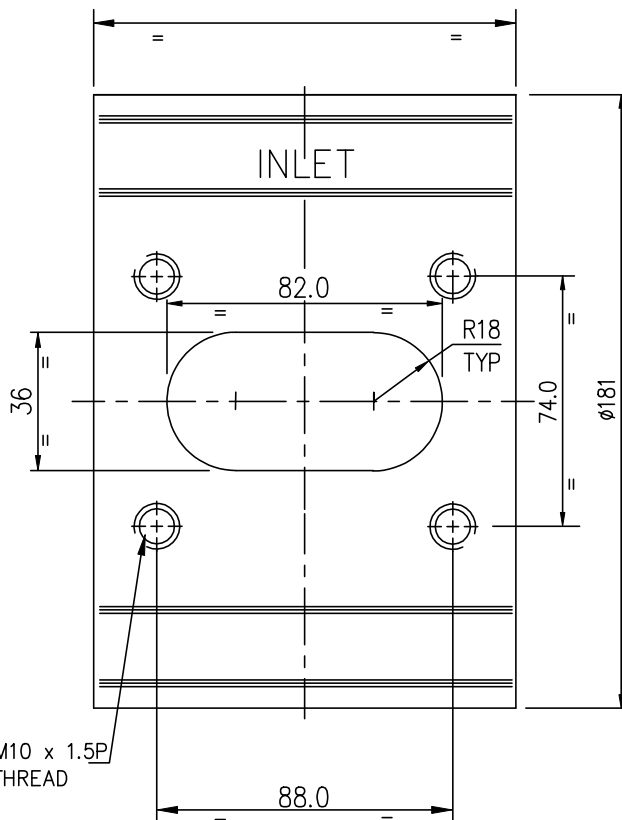
" CONSULT MARKETING FOR MORE FITMENT OPTIONS "

BODY PORTS CODE - S
PUMP TYPE - 3P 3500

WITH SUCTION ADAPTOR



WITH OUT SUCTION ADAPTOR

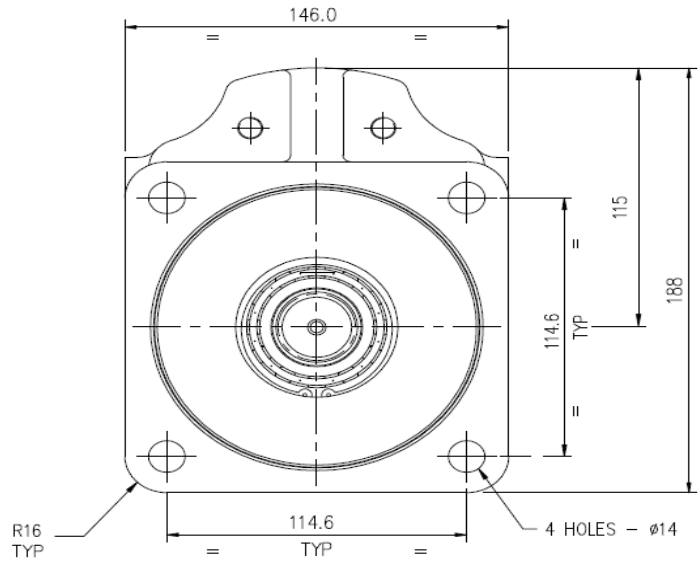
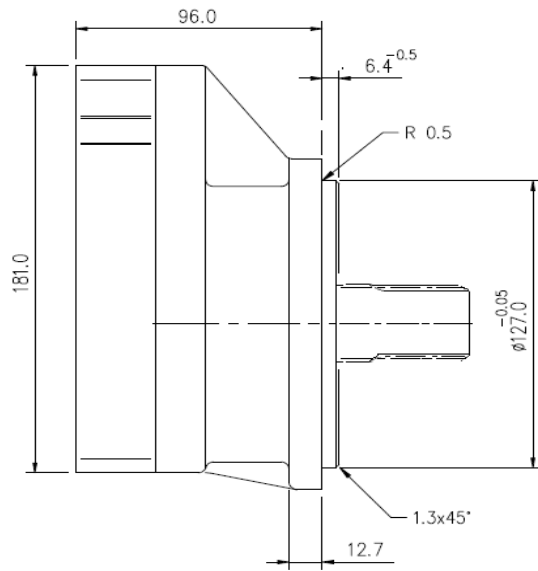


ALL DIMENSIONS ARE IN MM UNLESS OTHERWISE SPECIFIED.

" CONSULT MARKETING FOR MORE FITMENT OPTIONS "

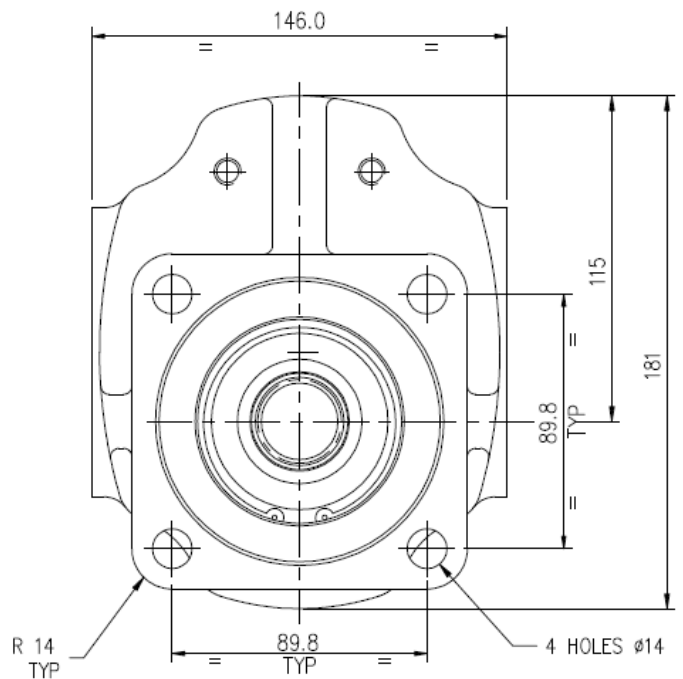
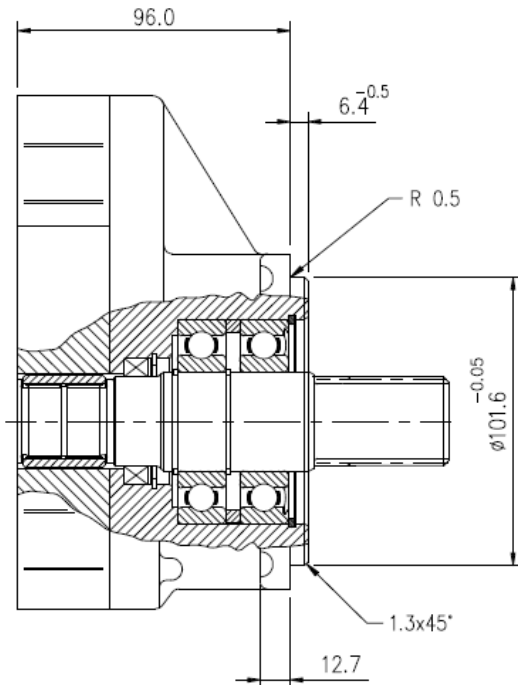
MOUNTING FLANGE 4-BOLT SAE CODE-3
 (With Bearing Support)

Available with shaft code P and S only

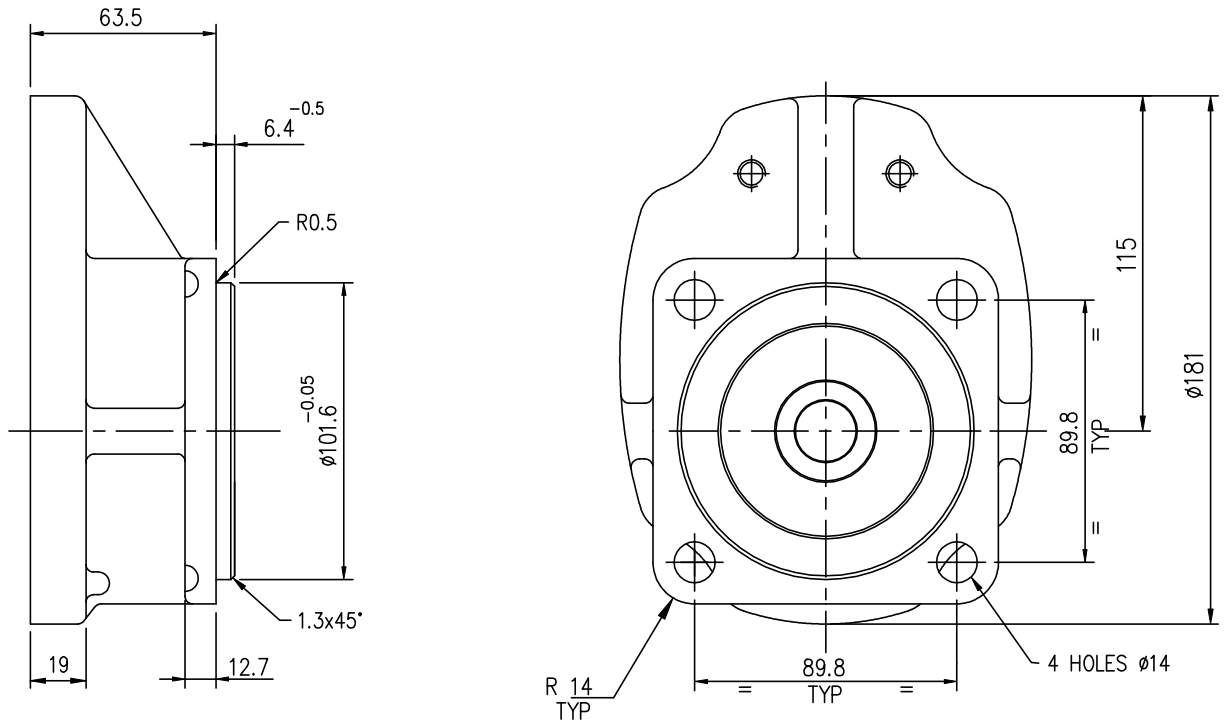


MOUNTING FLANGE 4-BOLT SAE CODE-2
 (With Bearing Support)

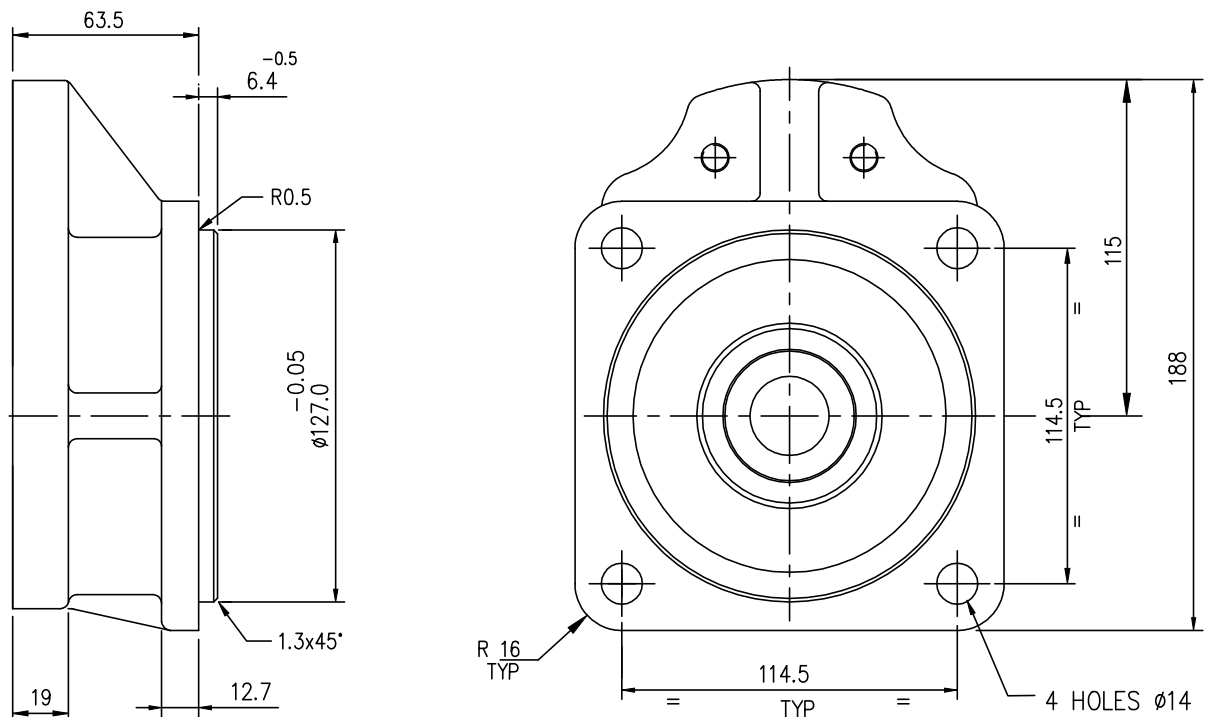
Available with shaft code P and S



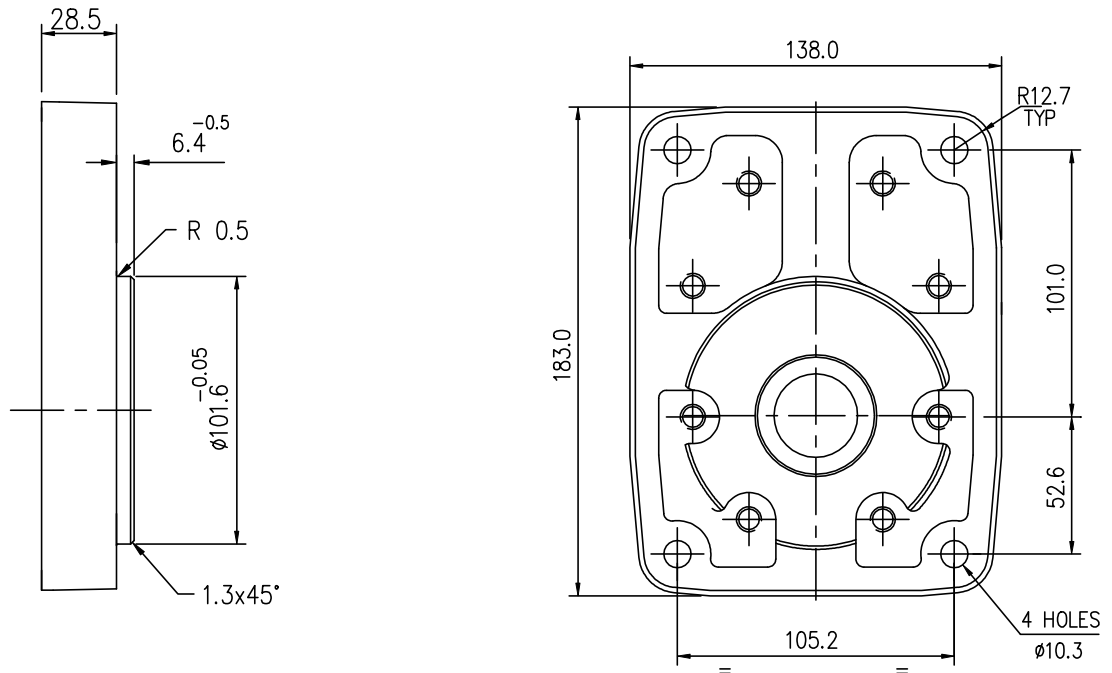
MOUNTING FLANGE 4-BOLT SAE CODE-B
 Available with shaft code P and S



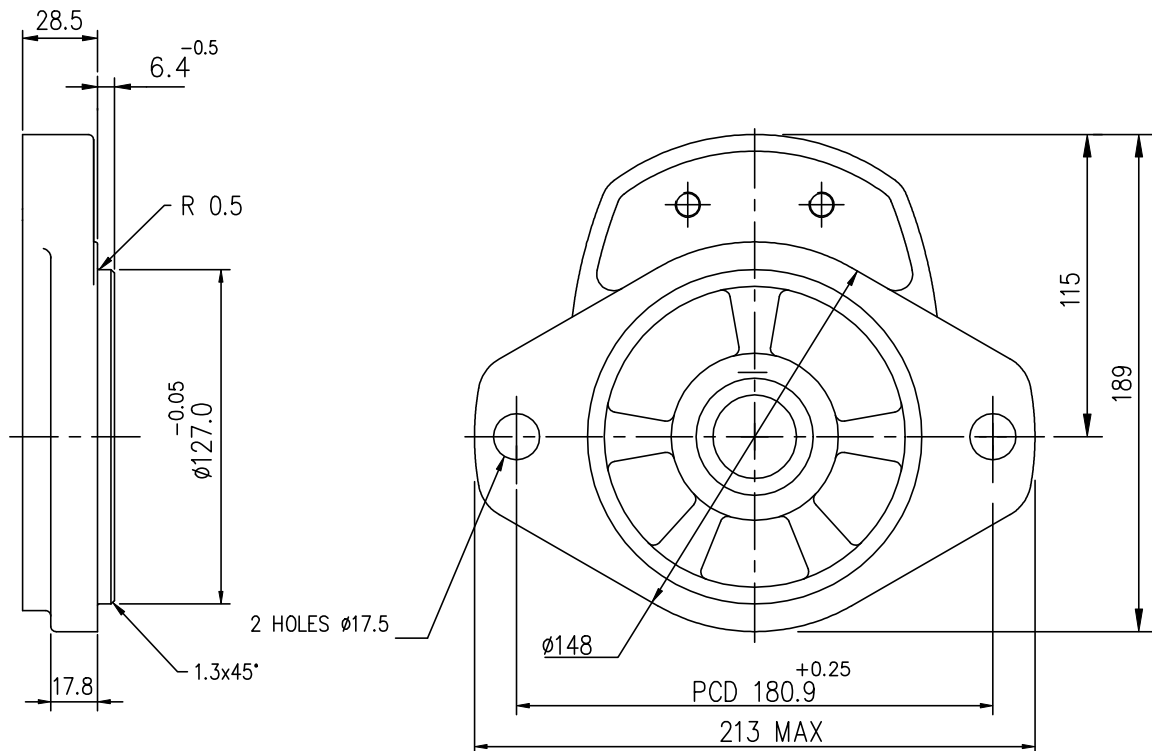
MOUNTING FLANGE 4-BOLT SAE CODE-C
 Available with shaft code P and S



MOUNTING FLANGE CODE - D
(4 - BOLT MOUNTING)

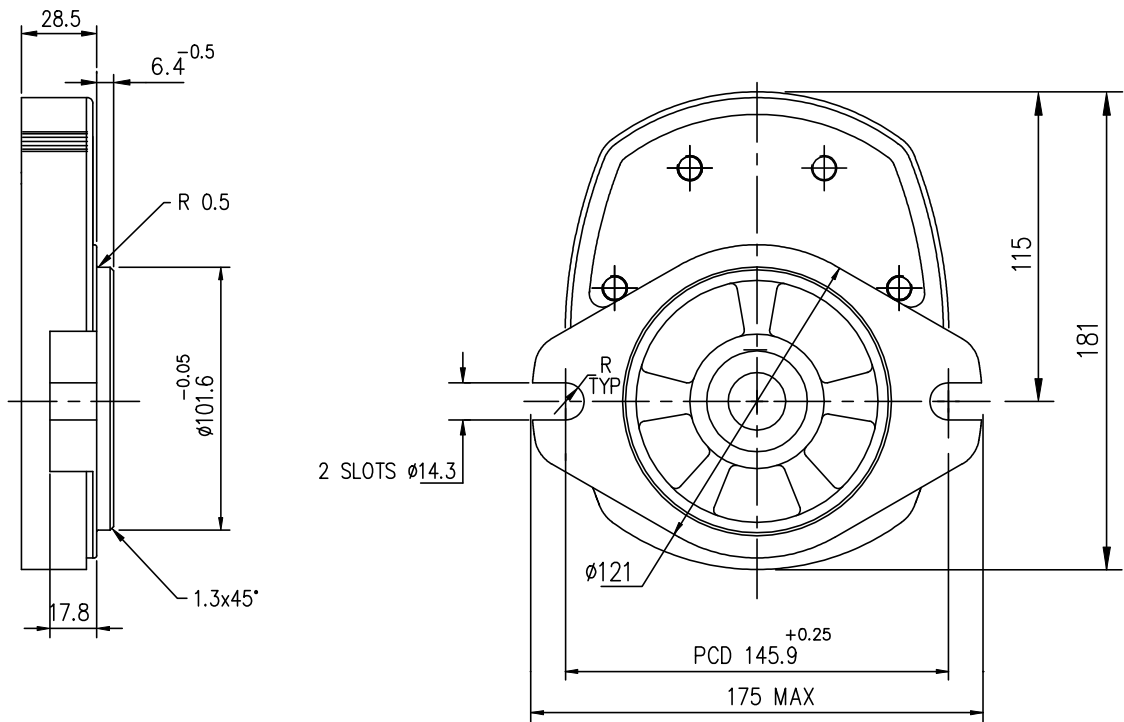


MOUNTING FLANGE CODE - S
(SAE-C, 2-BOLT MOUNTING)

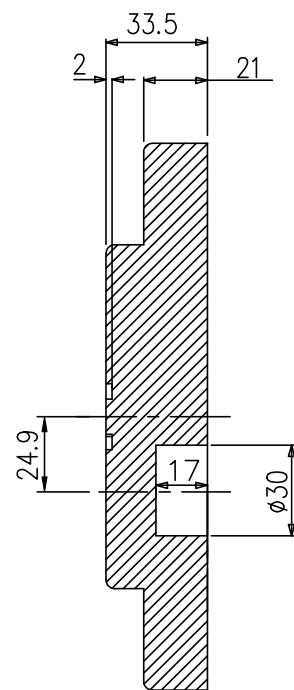
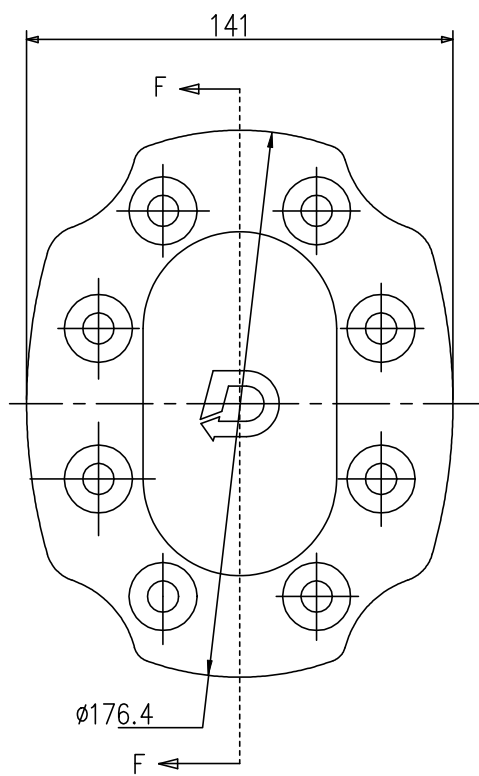


MOUNTING FLANGE CODE - E

(SAE-A, 2-BOLT MOUNTING)



MOUNTING COVER CODE - A



SECTION - FF

MOUNTING COVER CODE - B

