

# GROUP 2P – P3000 SERIES

## PERFORMANCE DATA

Pressures quoted are relief valve maximum by-pass

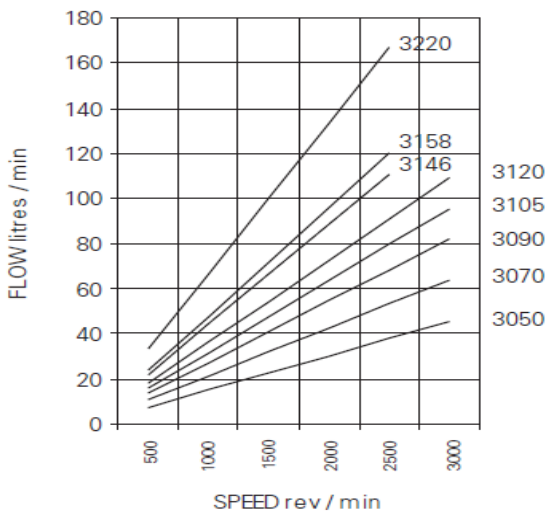
Performance with SAE 20W oil at 50° C

PUMP TYPE	DISPLACEMENT cc/rev	NOMINAL DELIVERY @1500 RPM & PRESSURE P		MAXIMUM CONTINUOUS PRESSURE P		SPEED AT MAXIMUM CONTINUOUS PRESSURE P	
		Max(lpm)	Min(lpm)	psi	bar	Max	Min
3050	16.67	25	21.8	3000	207	3000	700
3070	22.73	34	30.7	3000	207	3000	700
3090	28.79	43.2	39.4	3000	207	3000	700
3105	33.34	50	45.8	3000	207	3000	700
3120	37.88	56.8	52.3	3000	207	3000	700
3146	45.46	68.2	63.8	2525	174	2500	700
3158	49.40	74.1	68.9	2525	174	2500	700
3220	68.8	103.2	96	2000	138	2500	700

## TYPICAL PERFORMANCE

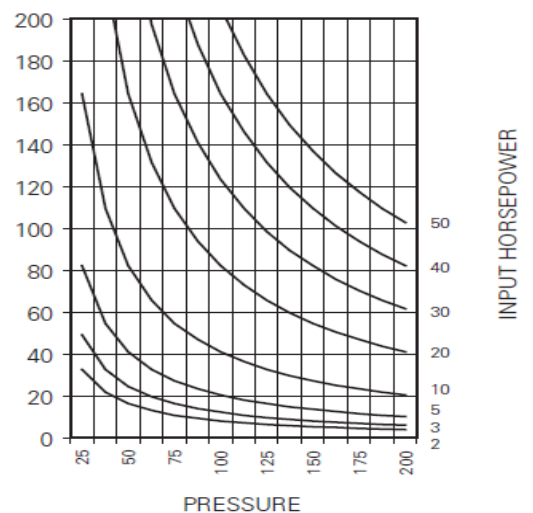
### TYPICAL PUMP DELIVERY

Flow at Max. Pressure.

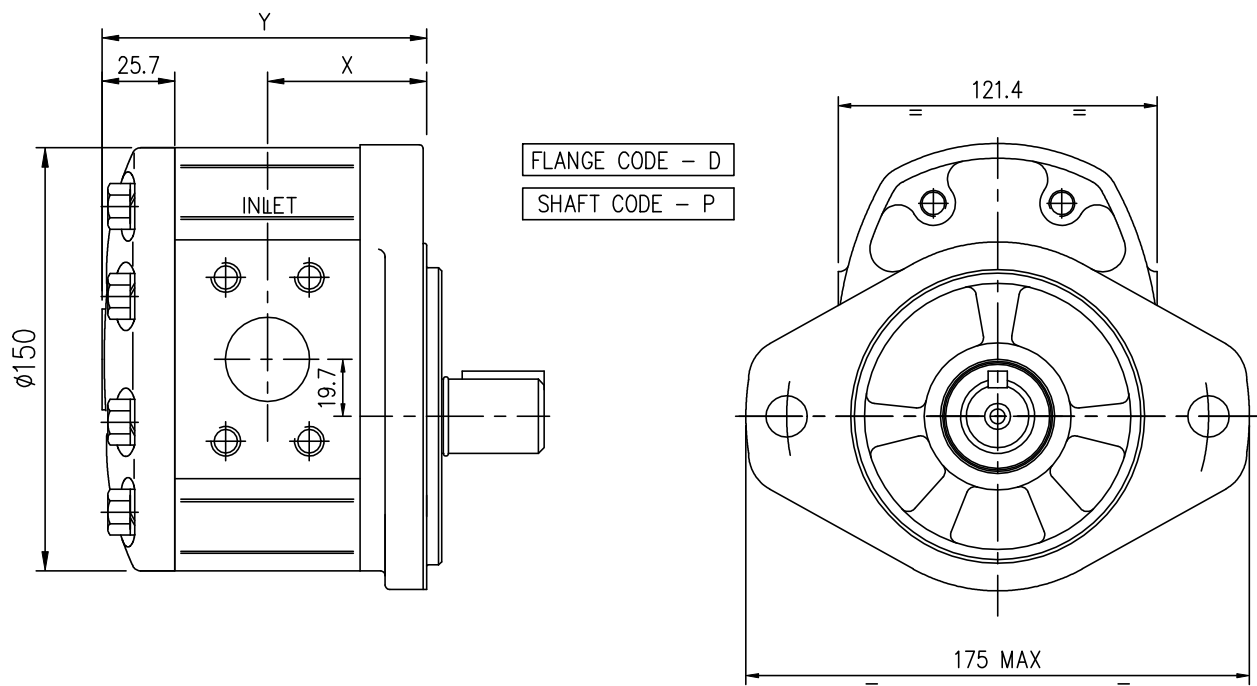


### TYPICAL INPUT HORSEPOWER

Fluid SAE 20W  
Fluid Temperature 50° C



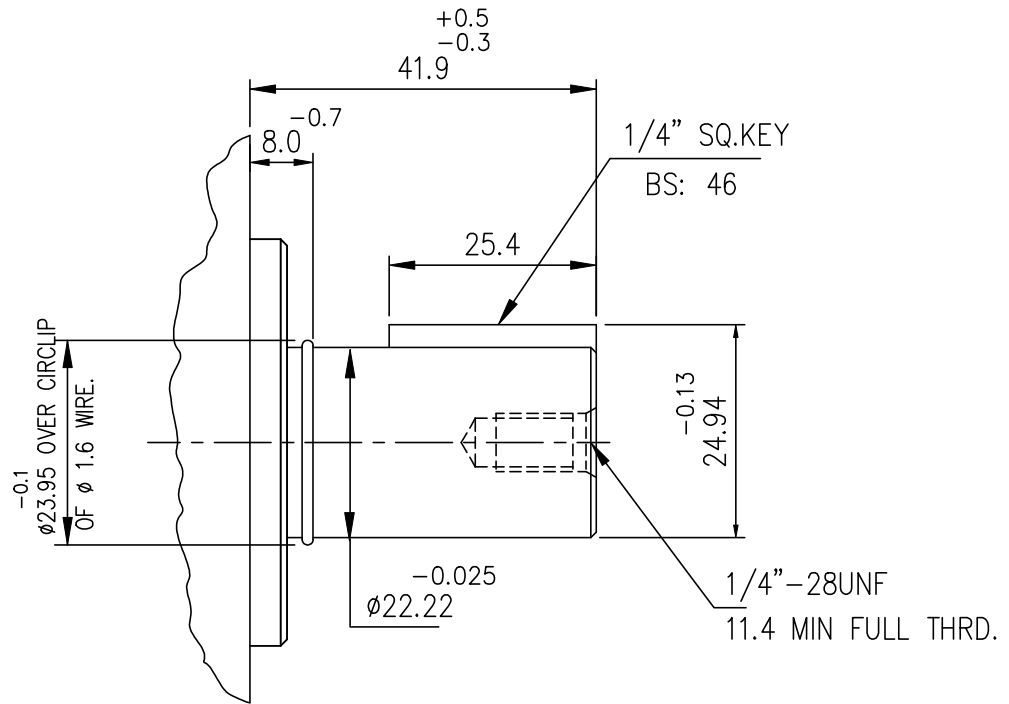
INSTALLATION DIMENSIONS



PUMP TYPE	DIMENSIONS	
	X	Y
2P-3050	54.3	112.7
2P-3070	56.7	117.5
2P-3090	59.1	122.3
2P-3105	67.9	139.8
2P-3120	69.7	143.5
2P-3146	72.7	149.6
2P-3158	74.3	152.7
2P-3180	69.7	143.5
2P-3200	72.7	149.6
2P-3220	81.7	167.5

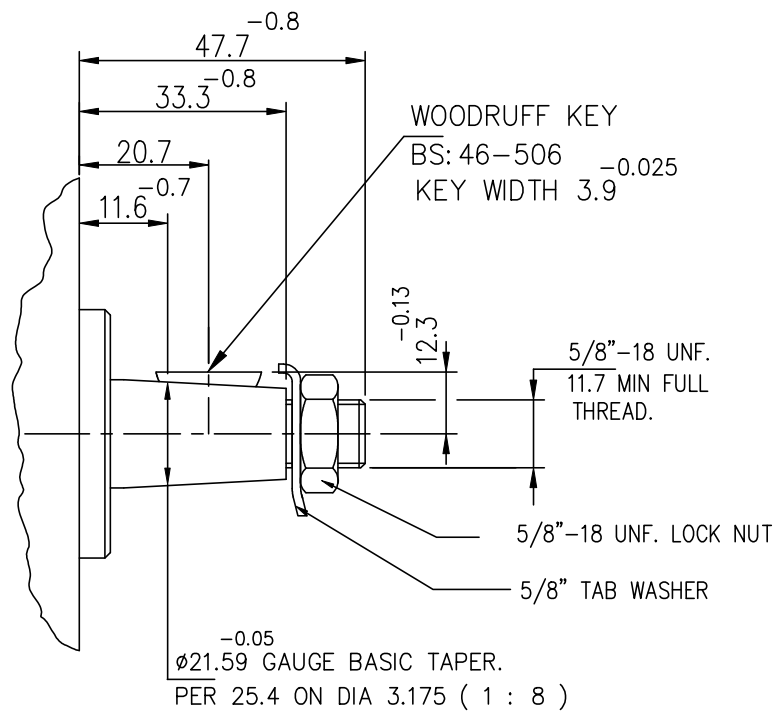
DRIVE SHAFT CODE - P

FLANGE CODE: D & S



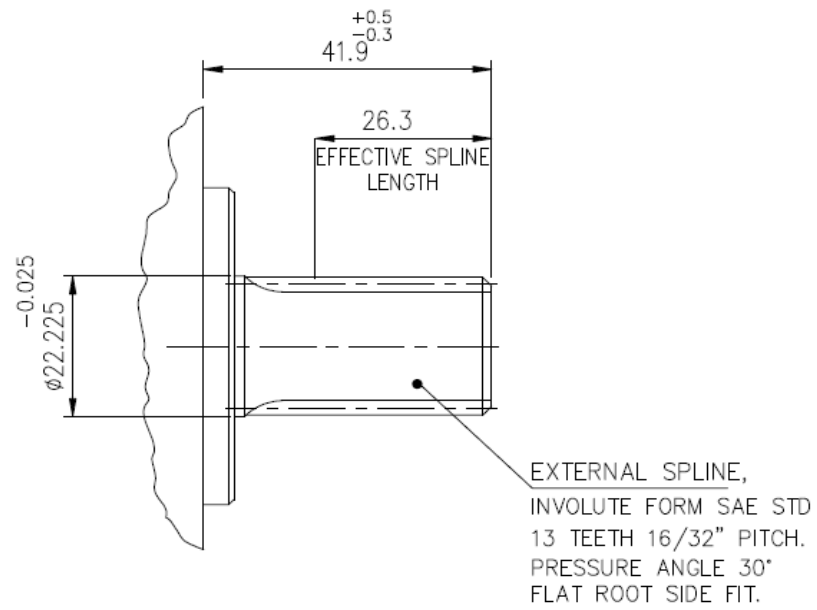
DRIVE SHAFT CODE - T

FLANGE CODE: D & S



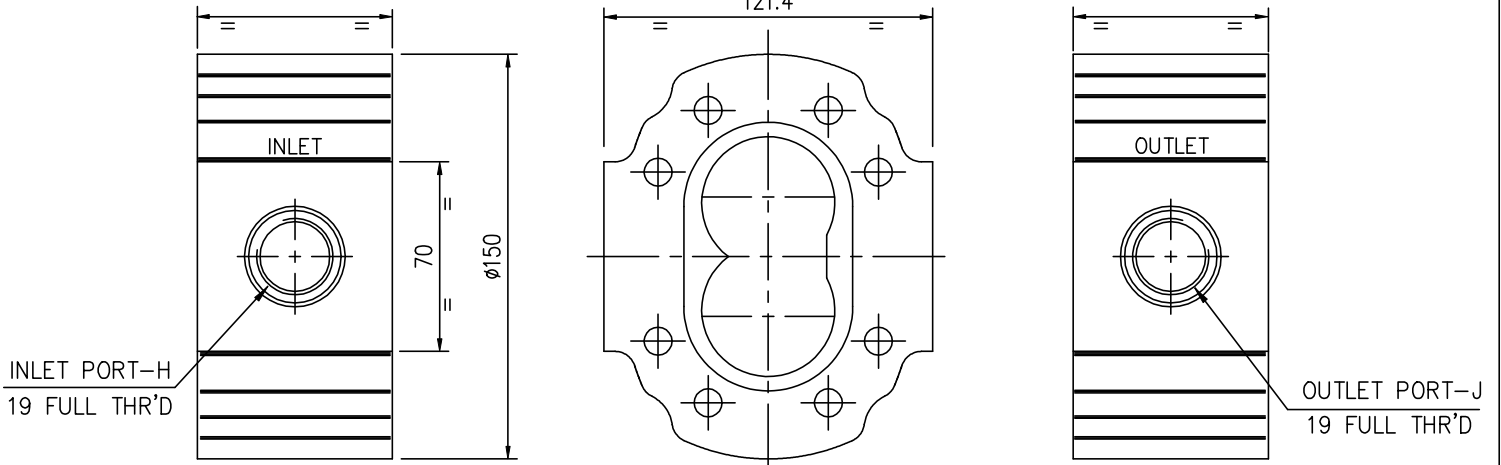
## DRIVE SHAFT CODE – S

FLANGE CODE: D &amp; S



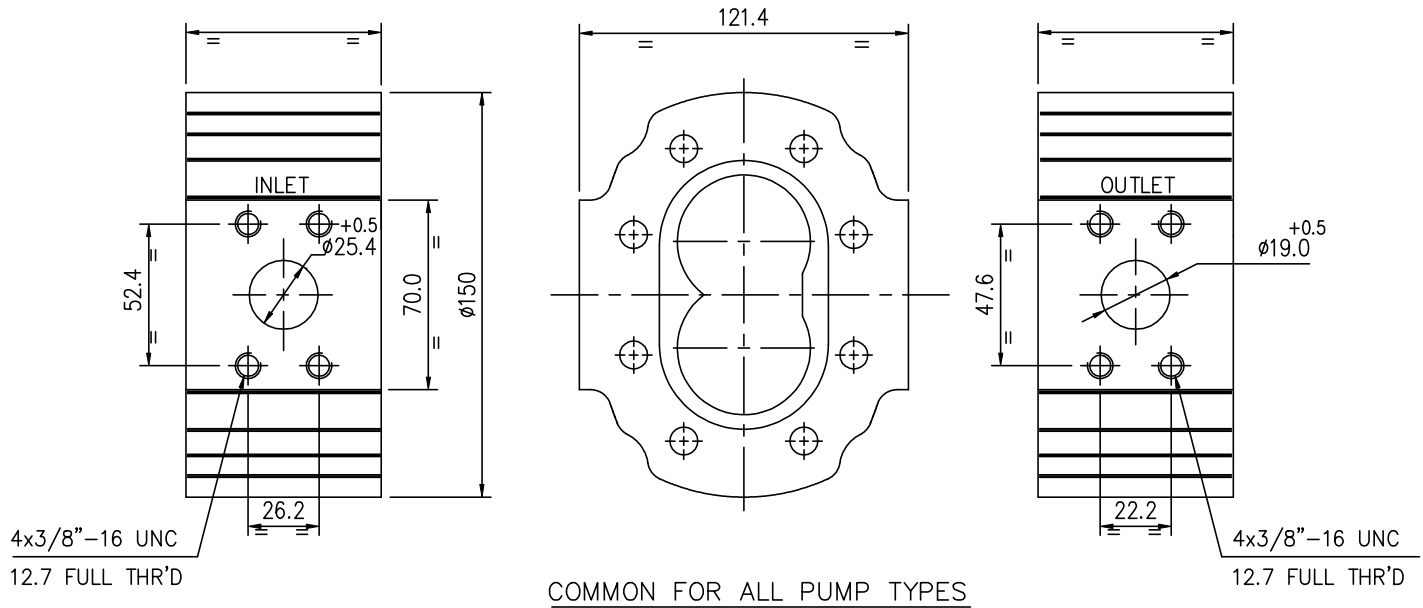
BODY PORT CODE – J

SAE O-RING THREADED PORTS (SAE: J1926/1)



PUMP TYPE	INLET PORT-H	OUTLET PORT-J
2P 3050	1-5/16"12UN	1-1/16"12UN
2P 3070	1-5/16"12UN	1-1/16"12UN
2P 3090	1-5/8"12UN	1-5/16"12UN
2P 3105	1-5/8"12UN	1-5/16"12UN
2P 3120	1-5/8"12UN	1-5/16"12UN
2P 3146	1-5/8"12UN	1-5/16"12UN
2P 3158	1-5/8"12UN	1-5/16"12UN
2P 3180	1-5/8"12UN	1-5/16"12UN
2P 3200	1-5/8"12UN	1-5/16"12UN
2P 3220	1-5/8"12UN	1-5/16"12UN

BODY PORT CODE – S

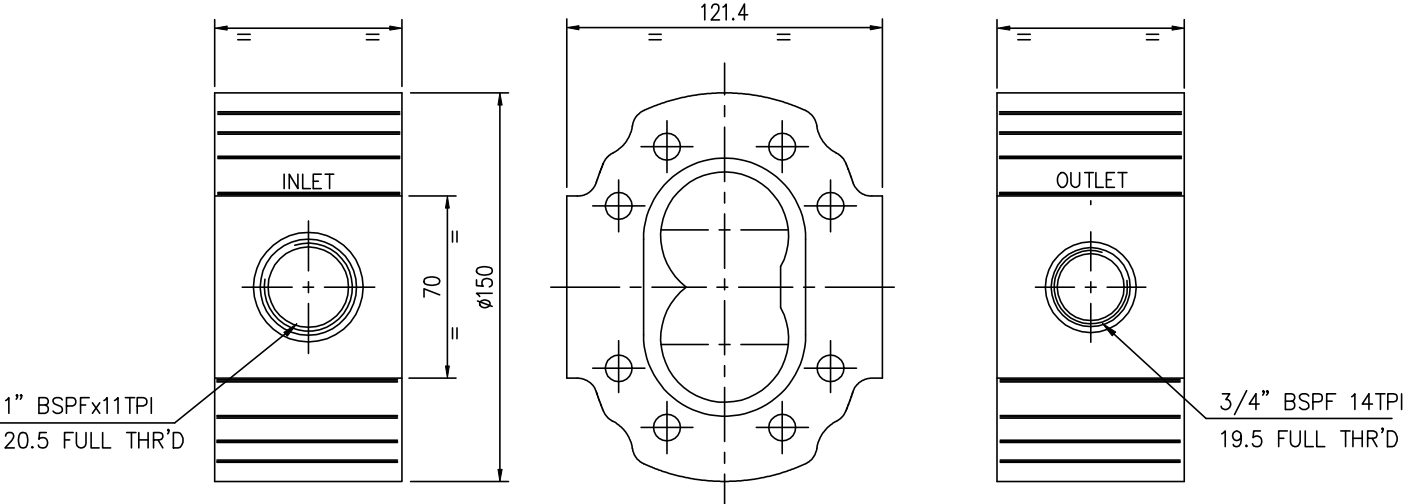


COMMON FOR ALL PUMP TYPES

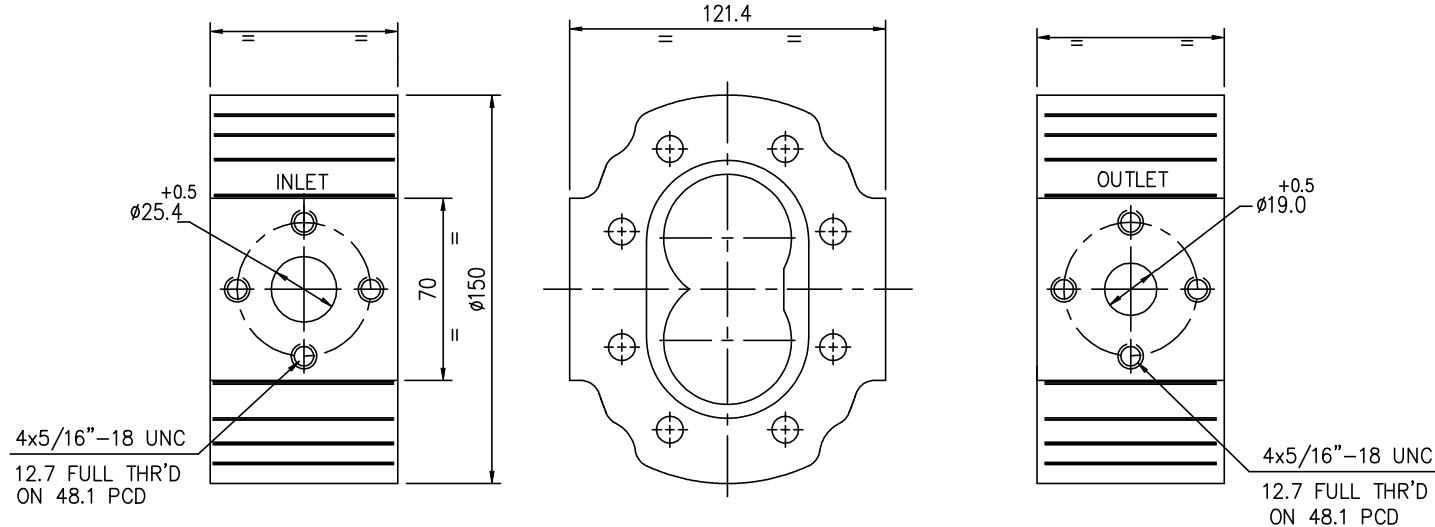
ALL DIMENSIONS ARE IN MM UNLESS OTHERWISE SPECIFIED.

" CONSULT MARKETING FOR MORE FITMENT OPTIONS "

BODY PORT CODE - T



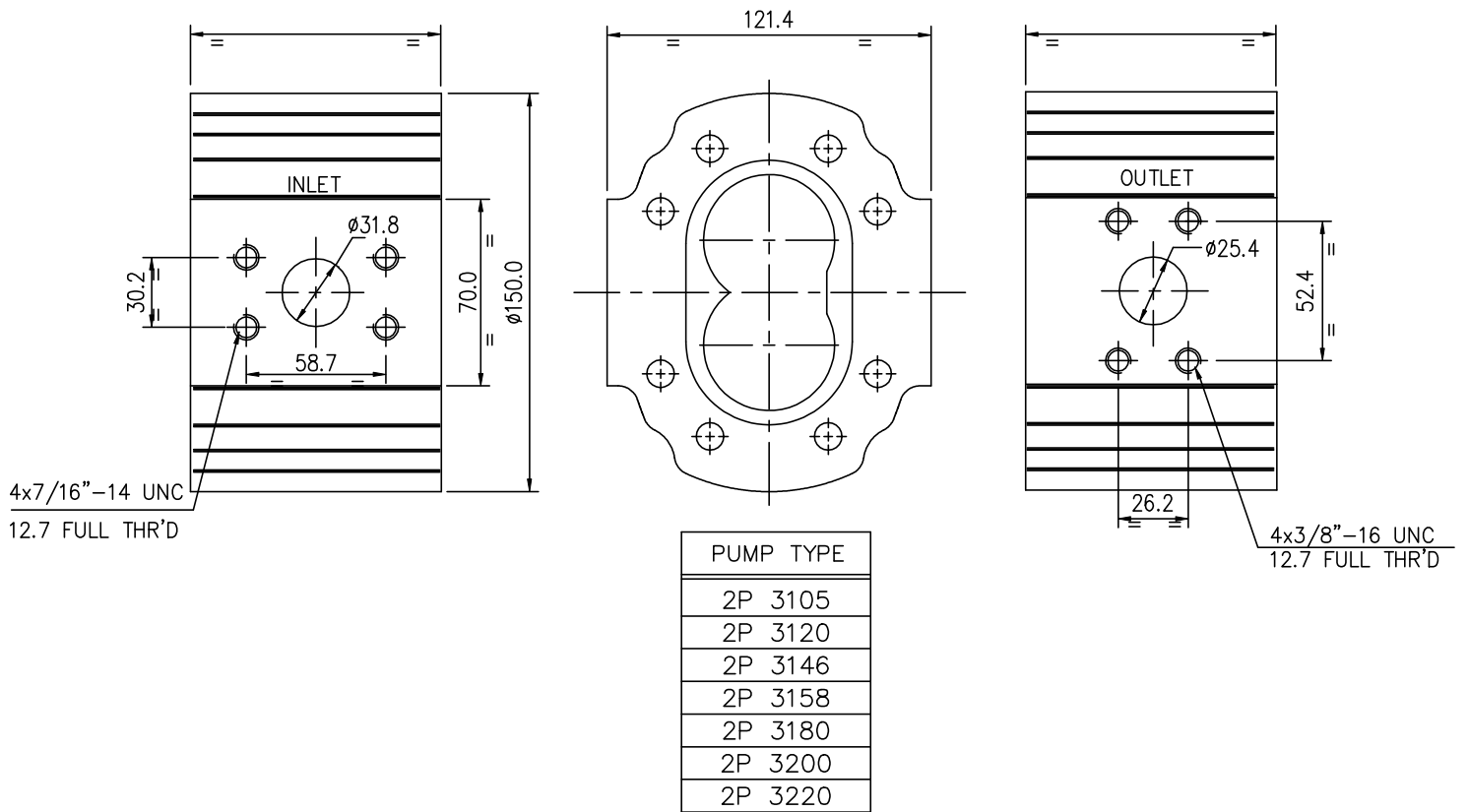
BODY PORT CODE - F



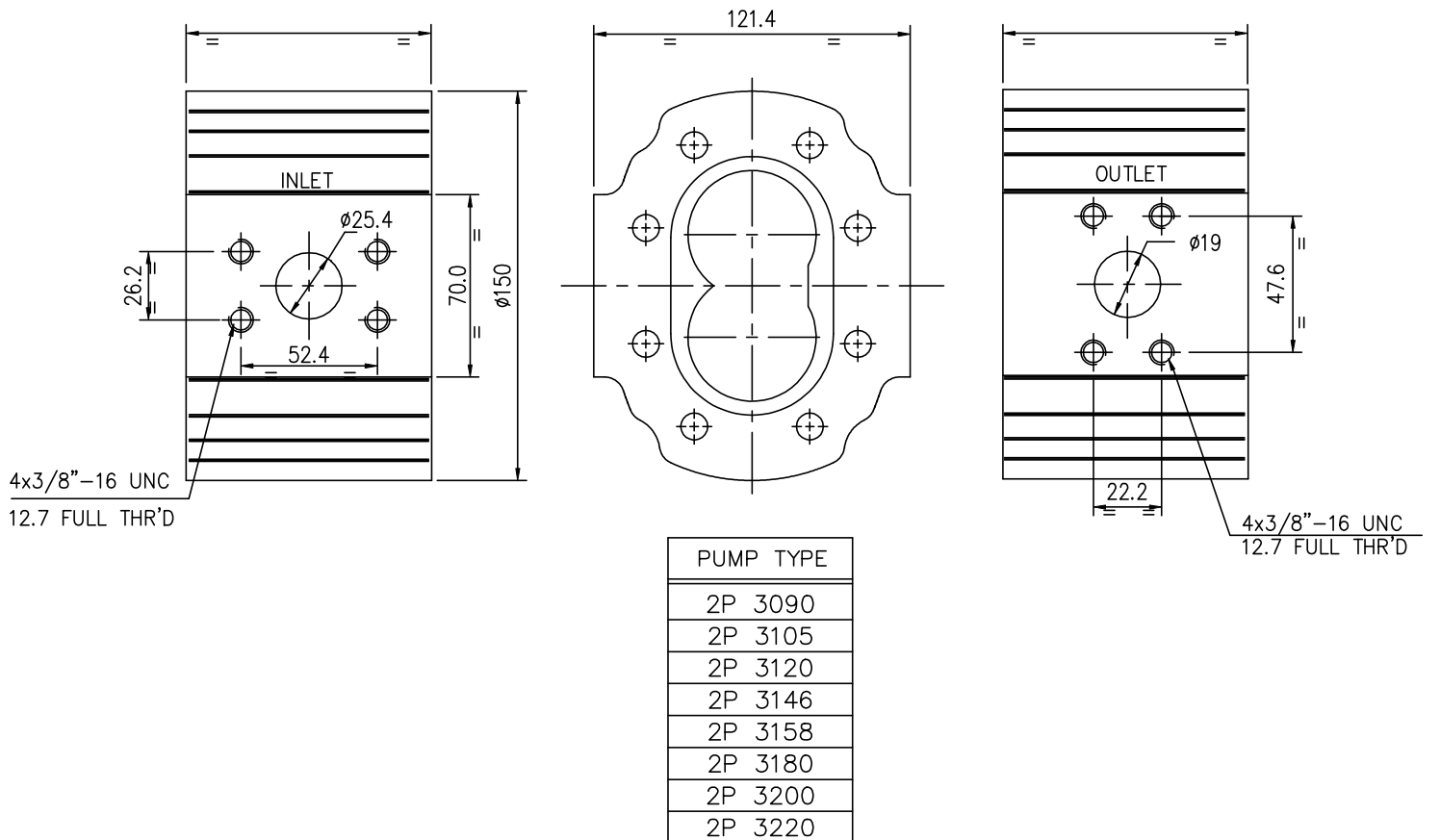
ALL DIMENSIONS ARE IN MM UNLESS OTHERWISE SPECIFIED.

" CONSULT MARKETING FOR MORE FITMENT OPTIONS "

BODY PORT CODE – V



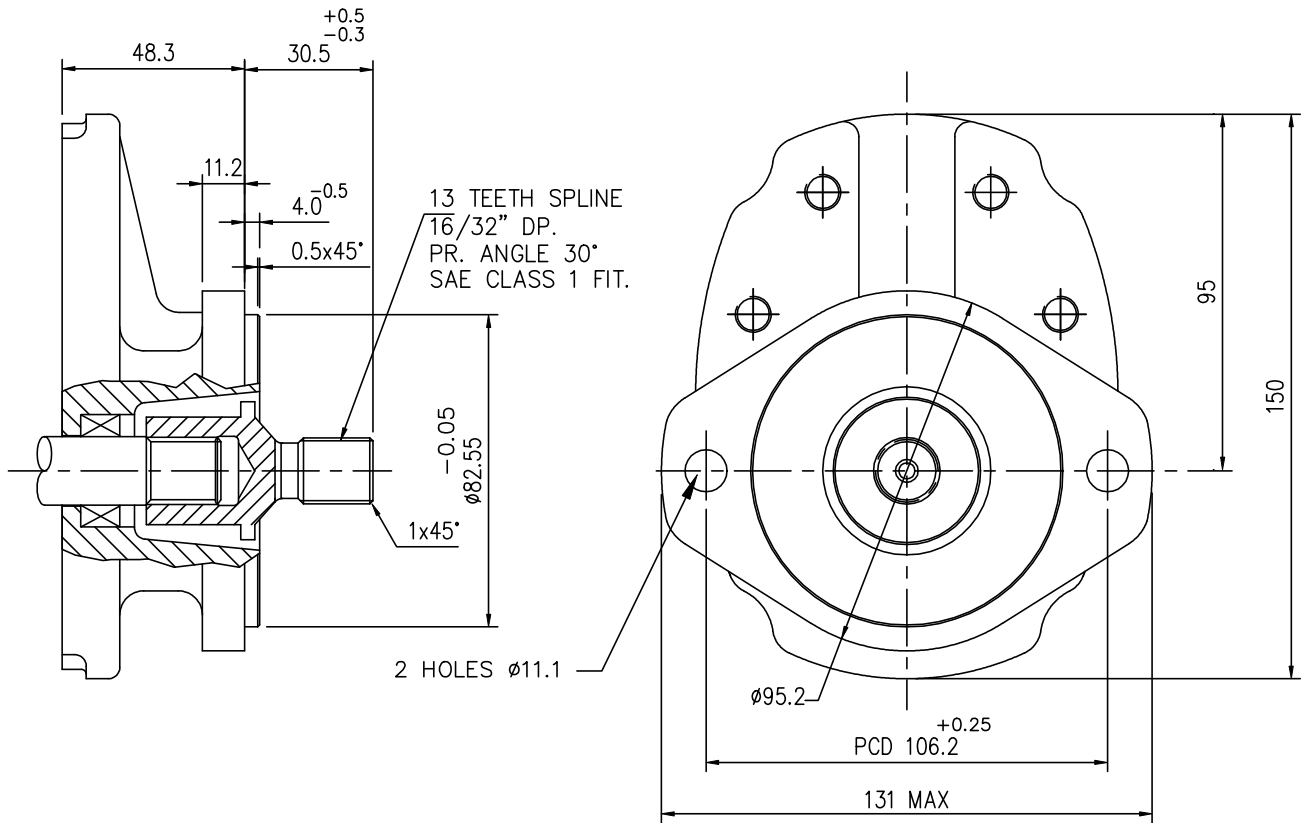
BODY PORT CODE – Z



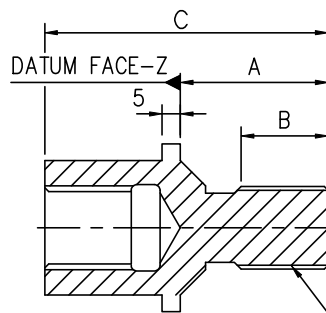
ALL DIMENSIONS ARE IN MM UNLESS OTHERWISE SPECIFIED.

" CONSULT MARKETING FOR MORE FITMENT OPTIONS "

MOUNTING FLANGE CODE-X  
 DRIVE SHAFT CODE-Q, QUILL ADAPTER ASSEMBLY (K2)



DRIVE SHAFT CODE-Q, ( QUILL ADAPTER )



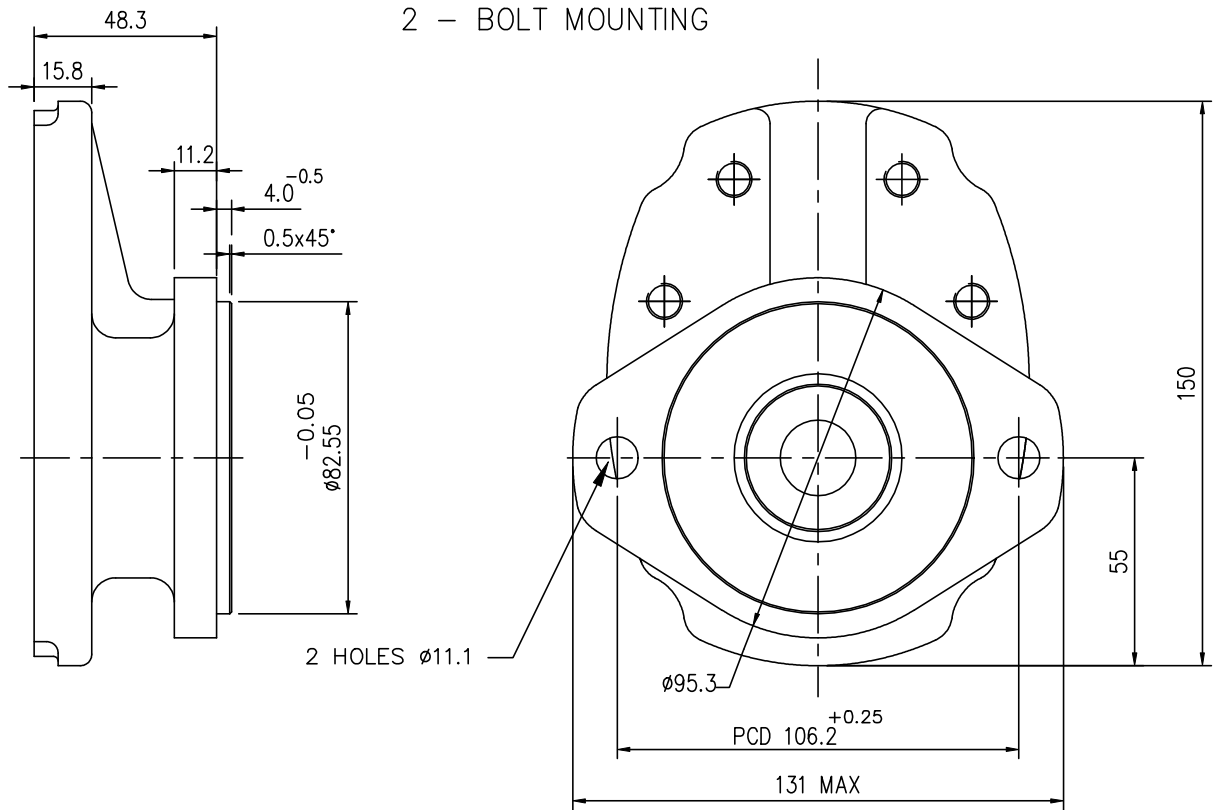
SPLINE DATA.  
 13 TEETH 16/32 DP  
 MAX.EFF. TOOTH THICK  
 0.13 BELOW CLASS 1 Fit.

QUILL CODE.	MAX. STANDOUT.	SPLINE LENGTH	TOTAL LENGTH
	A	B	C
K2	26.7	12.2	52
K3	41.5	25.4	67



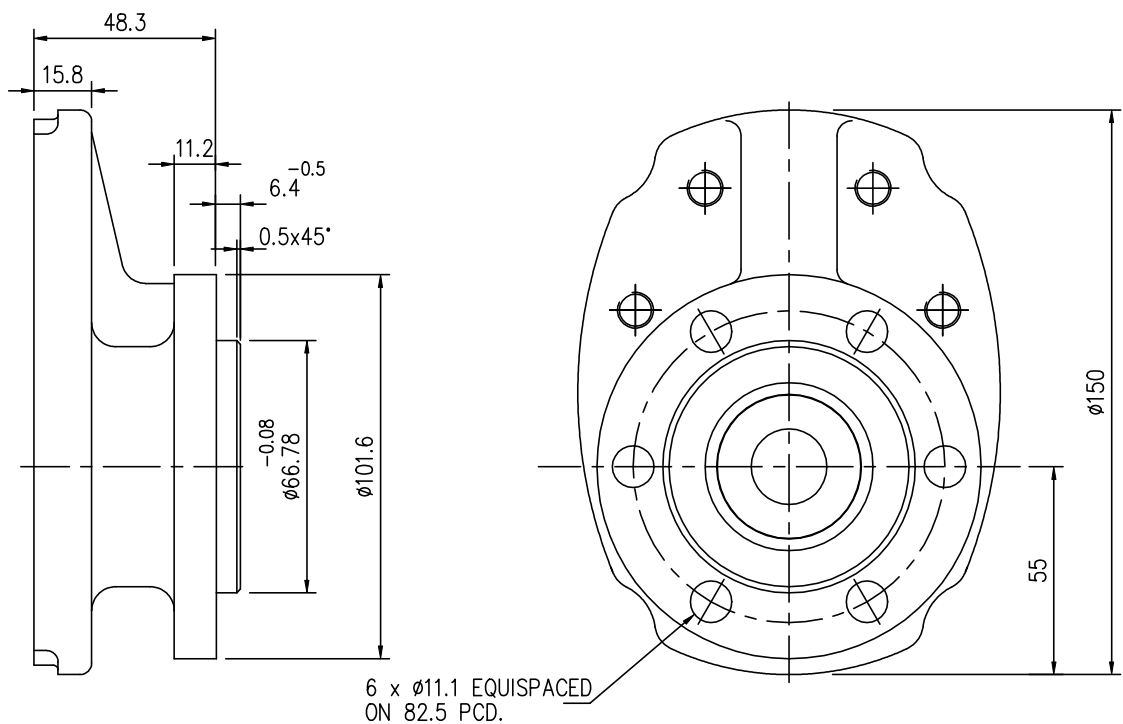
MOUNTING FLANGE CODE - X

2 - BOLT MOUNTING



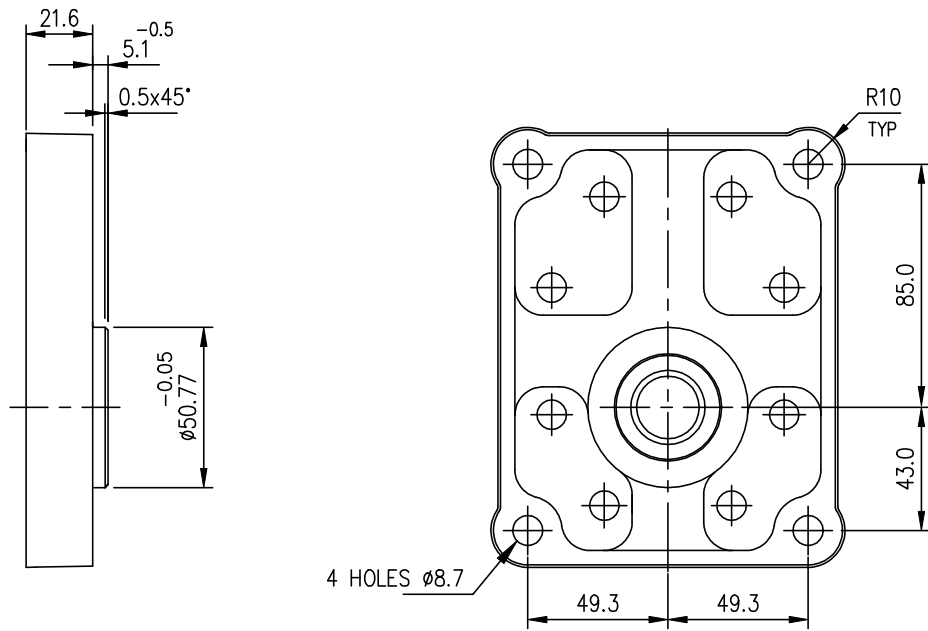
MOUNTING FLANGE CODE - H

6 - BOLT MOUNTING



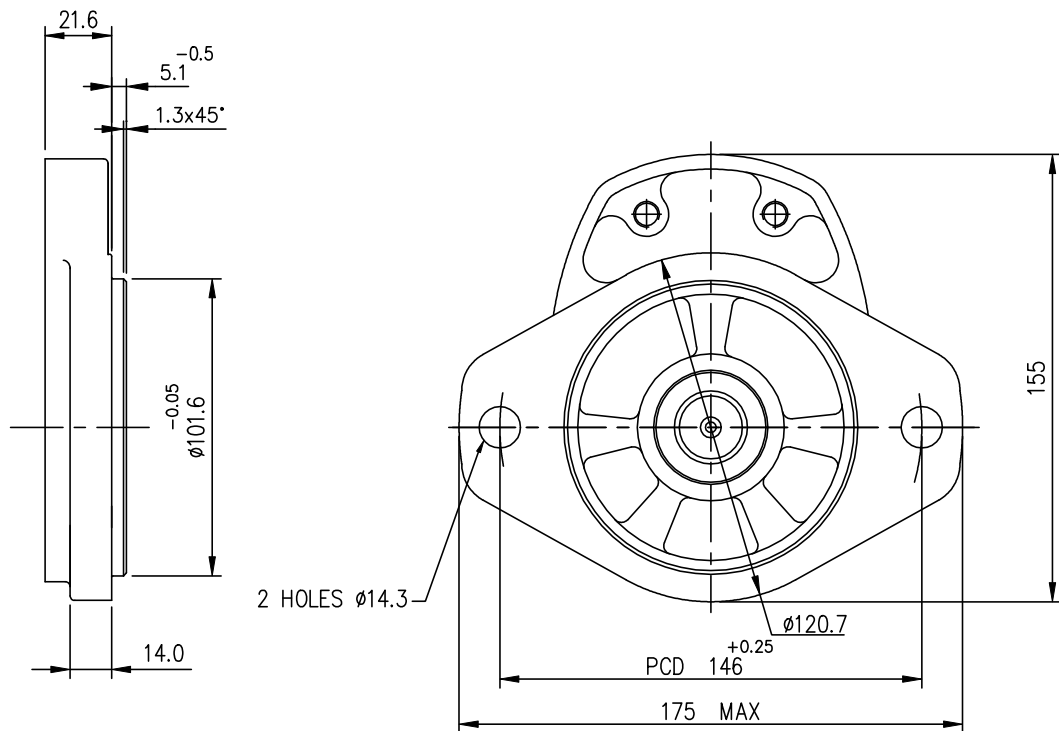
MOUNTING FLANGE CODE - D

4 - BOLT MOUNTING



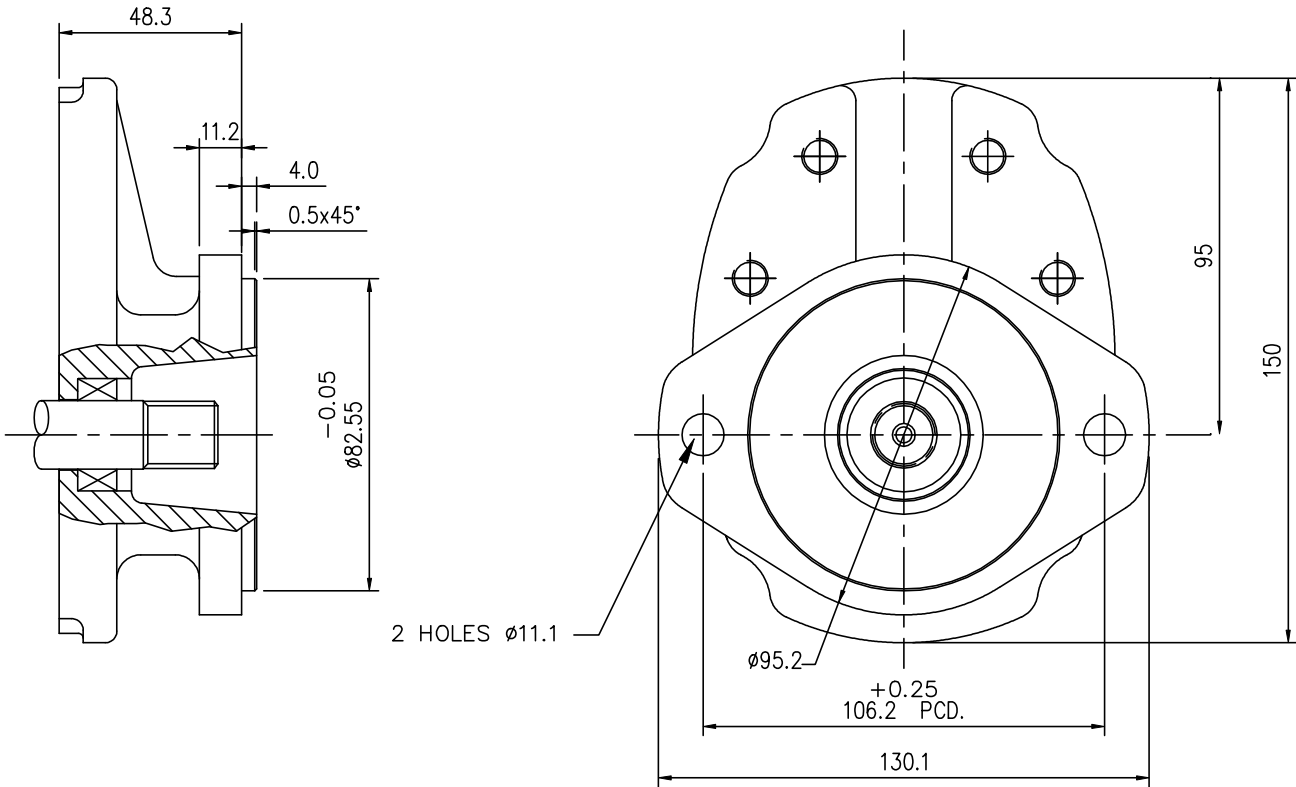
MOUNTING FLANGE CODE - S

SAE-B 2 - BOLT MOUNTING

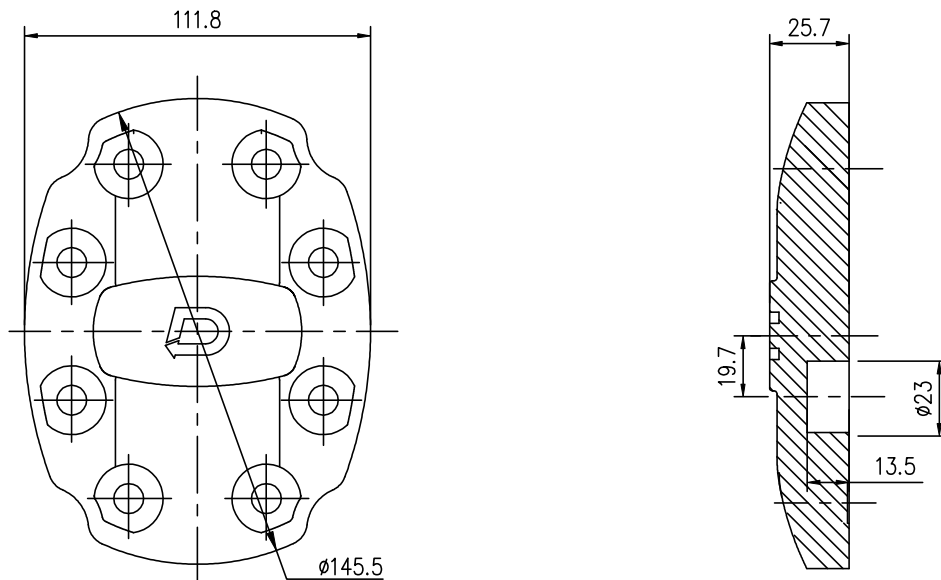


FLANGE CODE - X

DRIVE SHAFT CODE-Q, QUILL ADAPTER ASSEMBLY (K2)



## MOUNTING COVER CODE-A



## MOUNTING COVER CODE-B

